



NAVIGATOR™ EQUIPMENT MANAGEMENT SYSTEM

BRINGING
EFFICIENCY
TO EVERY DEPARTMENT HOSPITAL-WIDE



PRODUCT
OVERVIEW



ORGANIZATION = EFFICIENCY

The Navigator™ Equipment Management System

Organize equipment to improve overall efficiencies. The Navigator houses critical equipment (specific to the area of care), video integration inputs and outputs, medical gases and electrical outlets.

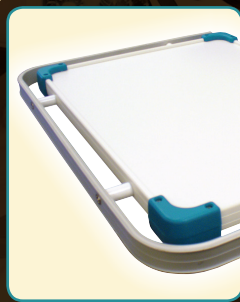
FEATURES



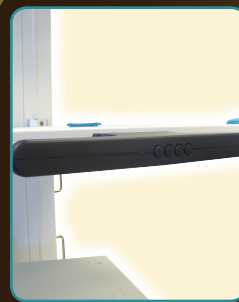
Video, C-arm or ultrasound inputs provide convenient points of connection for routing images to high-definition monitors.



Critical electrical outlets supply power to the equipment on the shelves and auxiliary equipment needed in the care area.



Ergonomically-designed equipment rails for mounting accessories such as suction canisters, IV poles and/or monitors.



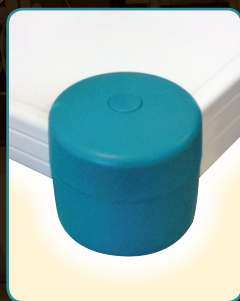
Unlock each rotational joint independently or simultaneously from the brake handle for optimal positioning of critical equipment.



Optional entertainment package can be added to the Navigator complete with digital music docking station, waterproof ceiling-mounted speakers and audio receiver.



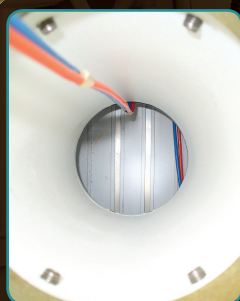
Optional rear control handle to release brakes for navigating around sterile field.



Rounded corners to protect cables from becoming tangled or frayed.



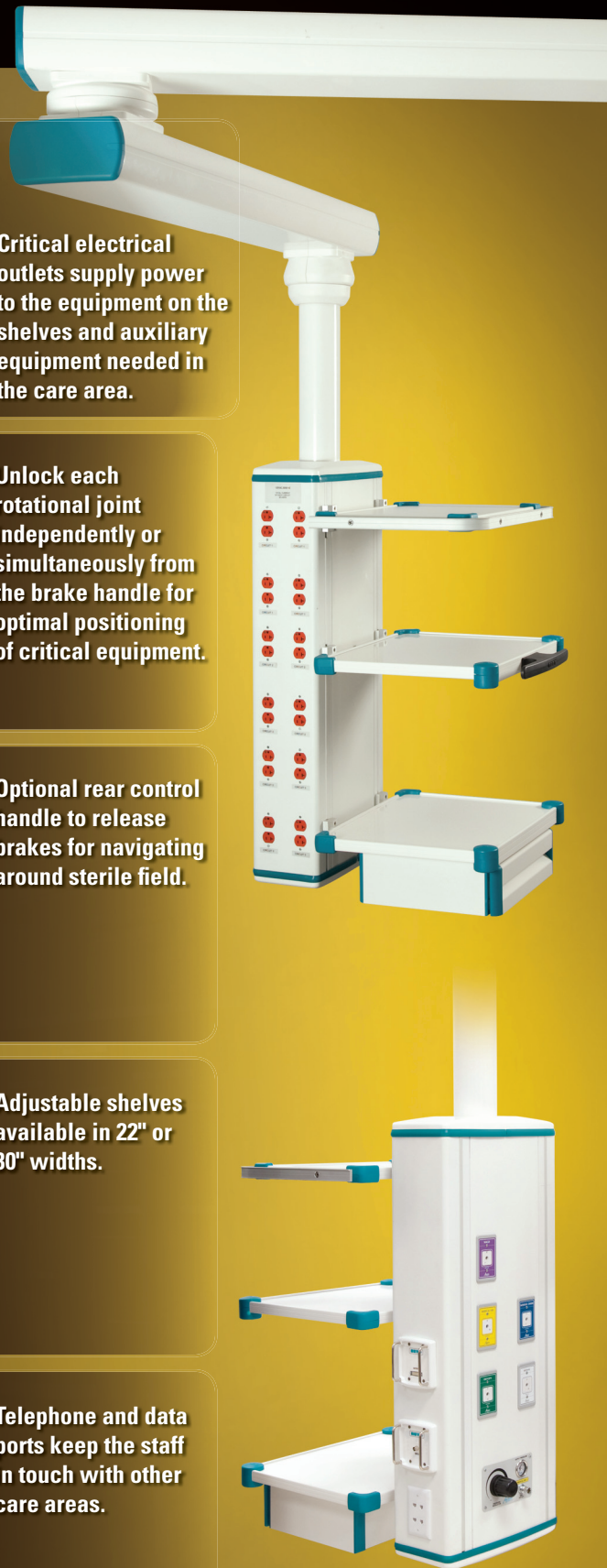
Adjustable shelves available in 22" or 30" widths.



Abundant throughway for power cables, gas hoses and video cables permits for future expansions.



Telephone and data ports keep the staff in touch with other care areas.



CARE CENTERS

EQUIPMENT MANAGEMENT FOR EVERY DEPARTMENT

The versatility of the Navigator Equipment Management System allows for custom configurations based on specialty. A service head can be designed by our clinical specialists for every critical patient care area.

ICU

Create a better working environment.

With the Navigator, the bed is away from the wall allowing superior patient access. In the event of an emergency, the caregiver has an unimpeded working environment. Gas connections, IV poles, patient monitors and critical equipment are off the floor and contained in a single location for patient care and family visitations.



ER

When every minute counts, make sure your critical equipment is within reach.

Provide clinically-correct positioning of essential equipment around the entire trauma bay, not just the head. Have access to medical gases, suction, electrical outlets and data ports in treatment areas.



Endoscopy

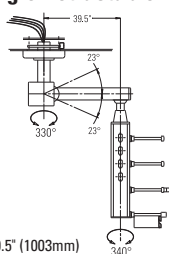
Make your GI suite more profitable.

Increase the number of procedures you are able to perform by centralizing your equipment off the floor. Mount a flat panel monitor, vital signs monitor, endoscope camera, light source and, scope holder conveniently within arms reach. Rotate the head to accommodate an upper or lower procedure.



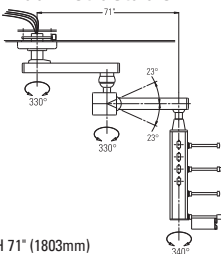
RETRACTABLE ARMS

Single Retractable Arm



REACH 39.5" (1003mm)

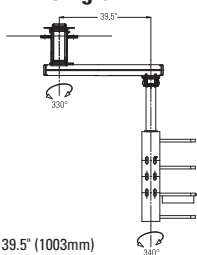
Dual Retractable Arm



REACH 71" (1803mm)

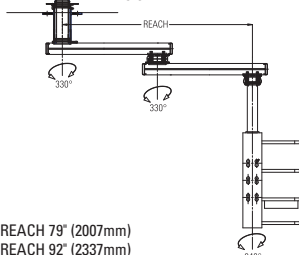
FIXED ARMS

Single Arm



REACH 39.5" (1003mm)

Dual Arm



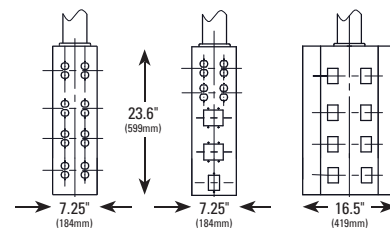
REACH 79" (2007mm)
REACH 92" (2337mm)

SERVICE HEADS

V6

max.

Gas.....	8
Elec Dup.....	12
Video/Data Inputs	4
Shelves	2
Drawers	1

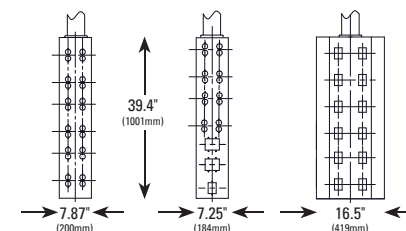


Available for fixed or retractable

V10

max.

Gas.....	10
Elec Dup.....	16
Video/Data Inputs	4
Shelves	4
Drawers	1



Available for fixed arm only

Shelf widths available: 18" x 22" (457mm x 559mm) & 18" x 30" (457mm x 762mm)

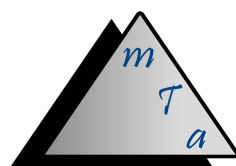


N U V O, I N C.

A member of the Medical Illumination International Group



A2Z00485



MODERN TECH ASSOCIATES

NUVO reserves the right to make changes without notice in design, specifications, and models. The only warranty NUVO makes is the express written warranty extended on the sale or rental of its products.

© 2010 NUVO, Inc.

ALL RIGHTS RESERVED.